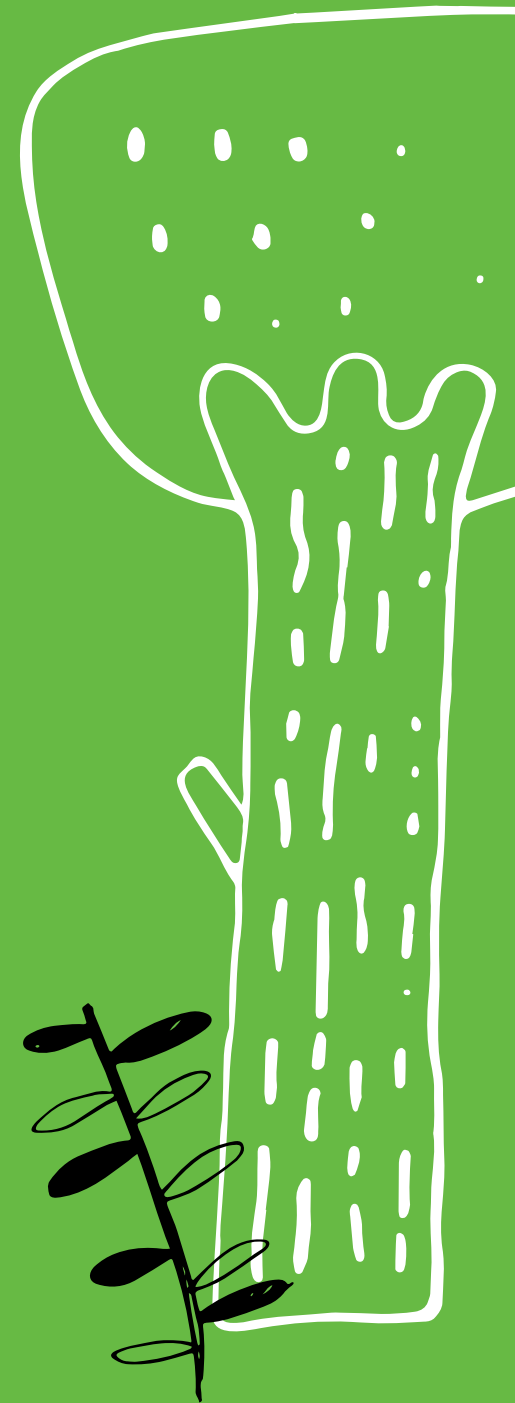


Thank you for
recycling with us!



HOUSEHOLD SORTING GUIDE

puhas



Let's take care of the environment together.



BIOWASTE

- Fruit and vegetable peels
- Cooled fats, cooking oils
- Coffee grounds, tea bags, filter papers
- Fish bones, small bones
- Plant parts, potting soil
- Food scraps
- Paper towels and napkins

How to sort

- Absorb liquids.
- Collect liquid biowaste, such as cooking oils, in a milk carton and place it in the biowaste bin.
- Pack biowaste in a paper bag, newspaper, or a biodegradable bag before placing it in the collection bin.

What is made from it

- Biogas for electricity and district heating production
- Nutrient-rich recycled fertiliser for agriculture



CARDBOARD PACKAGING

- Ready-meal packaging
- Multipacks for beverages, such as six-packs and trays
- Cardboard packaging fillers
- Cartons (including aluminium-lined cartons)
- Disposable cups
- Packaging for dry goods, such as cereal boxes and bread bags
- Takeaway food packaging
- Cardboard boxes
- Paper bags, carrier bags and wrapping paper
- Pizza boxes, egg cartons
- Cores from toilet paper and paper towel rolls

How to sort

- Empty and flatten.

What is made from it

Cardboard packaging, corrugated cardboard and various cardboard cores.



PLASTIC PACKAGING

- Food packaging, such as yoghurt pots, butter tubs, cold cut, cheese and ready-meal packaging
- Disposable cups
- Takeaway food packaging
- Plastic bags, carrier bags and wrapping
- Plastic packaging fillers
- Other household plastic packaging, such as toy packaging
- Detergent, shampoo and soap packaging
- Bottles, canisters, jars and tubes
- Polystyrene (Styrofoam) packaging

How to sort

- Empty or scrape clean.
- Remove caps, lids and pump parts and place them in the collection bin separately.

What is made from it

Flower pots, dish brushes, toilet brushes, plastic bags and refuse sacks



METAL

- Aluminium trays, foil and lids
- Metal lids, caps and closures
- Deposit-free drink cans
- Small metal items, such as frying pans, cutlery, screws and hand tools
- Food cans
- Casings of tealights and outdoor candles
- Empty aerosol cans

How to sort

- Take packaging that contains hazardous residues or pressure (e.g. paints, chemicals, oils, hairspray) to a hazardous waste collection point.
- Take large metal items to a waste station.

What is made from it

New metal packaging, bicycle frames, shovels and car parts



GLASS PACKAGING

- Glass jars
- Deposit-free glass bottles

How to sort

- Remove caps and lids. Neck rings and labels do not need to be removed.
- Empty or drain.
- Return deposit glass bottles to the store's return machine.
- Place other glass items, such as glassware, window glass and ceramics, in mixed waste. Take larger quantities of other glass to a waste station.

What is made from it

New glass jars and bottles. Foam glass for construction.



PAPER

- Envelopes (including window envelopes)
- Copy paper, printouts, notepad paper
- Advertisements, brochures, product catalogues
- Newspapers and magazines

How to sort

- Staples do not need to be removed.
- Place dirty paper in mixed waste.

What is made from it

Newsprint, toilet paper and hand towel paper.



COMBUSTIBLE WASTE

- Underwear, socks, shoes, belts, bags
- CDs, DVDs, vinyl records, floppy disks, cassette tapes
- Smelly and dirty textiles
- Incandescent and halogen bulbs, fuses
- Sanitary products, cotton buds, diapers
- Hand towel paper
- Gift wrapping paper
- Glassware, ceramics, mirrors, porcelain, window glass fragments
- Pet bedding
- Plastic items, such as toys, toothbrushes and freezer containers
- Leather, imitation leather, rubber
- Blankets and pillows
- Small wooden items
- Chewing gum
- Vacuum cleaner bags, cleaning waste
- Ash, cigarette butts

How to sort

Non-combustible materials such as glass and ceramics can be placed in combustible waste in small quantities. Take larger amounts to a waste station.

What is made from it

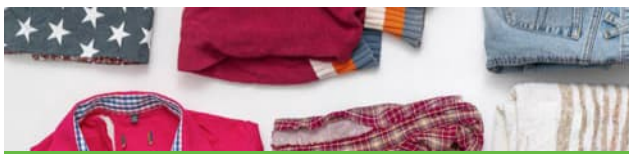
Used for electricity and heat production at a waste-to-energy plant.



ELECTRICAL WASTE

Take to a waste station or electrical waste collection point, free of charge for households

- Household electronics, such as TVs, computers, audio equipment and phones, power banks
- Household appliances, such as refrigerators, cookers and washing machines
- Electrical cords and cables, extension leads
- Battery-operated or rechargeable clocks and toys
- Small appliances, such as coffee makers, electric toothbrushes, mixers and toasters
- E-cigarettes and vaping devices
- Power tools
- Monitoring and control devices, heating control units
- Luminaires, light strings, LED lamps



TEXTILE WASTE

Take to a textile waste collection point

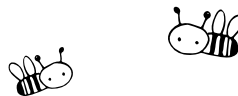
Clean and dry, but worn out or damaged:

- Trousers, skirts, shirts, coats
- Bed sheets, towels, tablecloths

How to sort

Do not include:

- underwear, socks, tights
- shoes, bags, belts
- carpets, pillows, duvets, cushions or soft toys
- wet, mouldy, strongly soiled or pest-infested textiles



BATTERIES AND SMALL ACCUMULATORS

Return to stores, free of charge for households

- Alkaline, lithium and button cell batteries
- Rechargeable batteries
- Small batteries from UPS units, solar panels and alarm systems
- Batteries from phones, computers, cameras and rechargeable tools

How to sort

- Cover the terminals of batteries and accumulators with tape.
- Place leaking batteries in a bag.



HAZARDOUS WASTE

Take to a waste station or a hazardous waste collection point

Free of charge for households

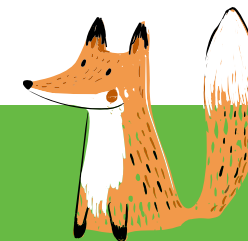
- Lead-acid batteries from vehicles and machinery
- Energy-saving bulbs and fluorescent tubes
- Perfumes, aftershaves, nail polishes and nail polish removers
- Coolants and brake fluids
- Gas cylinders and cartridges
- Plant protection and pesticides, and their packaging
- Unhardened paint, glue and varnish waste
- Treated wood
- Used oils, oily waste (e.g. rags), oil filters
- Solvents such as turpentine, acetone, petrol and solvent-based cleaning agents
- Wash water from painting tools
- Pressurised containers (aerosol cans), such as hairspray cans (if they rattle or hiss)
- Fire extinguishers
- Wood preservatives and impregnation agents
- Cleaning and disinfectants
- Batteries from electric bikes and scooters



MEDICAL WASTE

Return to any pharmacy, free of charge for households

- Mercury thermometers, packed safely
- Medicines containing iodine or bromine, and cytotoxic drugs, in their original packaging
- Liquid medicines, creams and sprays in their original packaging
- Needles and sharps, packed in a sealed plastic or glass container
- Tablets in their blister packs or loose in a transparent bag



FIND YOUR NEAREST ECOPOINT AT WWW.KIERRATYS.INFO

SERVICE POINTS

SELF-SERVICE STATIONS OPEN EVERY DAY

Kontiokaari

Self-service waste station in Joensuu
Ivontie 11b, 80230 Joensuu
Tel. +358 50 326 3528
www.puhas.fi/kontiokaari

Open daily (self-service) 6:00–22:00.
Household hazardous waste and electrical waste
accepted free of charge:
Mon–Wed 13:00–19:00, Thu–Fri 9:00–15:00.

Myllynkaari

Self-service waste station in Liperi
Kierrätyskuja 1, 80400 Ylämylly
Tel. +358 50 516 0634
www.puhas.fi/myllynkaari

Open daily (self-service) 6:00–22:00.
Household hazardous waste and electrical waste
accepted free of charge:
Tue 14:00–18:00.

Uuronkaari

Self-service waste station in Kontiolahti
Nosturikatu 4, 80770 Kontiolahti As.
Tel. 050 326 4017 www.puhas.fi/uuronkaari Open
daily (self-service) 6:00–22:00.

Household hazardous waste and electrical
waste accepted free of charge:
Mon 15:00–19:00, Thu 9:00–13:00.

OTHER SERVICE POINTS

Ilomantsi waste station

Hatelotie 3, 82900 Ilomantsi
Tel. 050 326 4493
Open on weekdays:
Mon 9:00–13:00 and Thu 15:00–19:00.

Check opening hours and information on exceptions on our website: www.puhas.fi



Polvijärvi waste station

Ahertajantie 2, 83700 Polvijärvi
Tel. +358 50 597 0254
Open on weekdays:
Tue 9:00–13:00 and Thu 14:00–18:00.

TAKE TO WASTE STATIONS

- bulky waste and large loads
- construction and renovation waste
- mineral waste, such as bricks and concrete
- scrap metal

BRING FREE OF CHARGE

DURING SERVICE HOURS ONLY

Household hazardous waste

Keep hazardous waste separate from other waste.
Bring hazardous waste in the original packaging or
label the containers clearly. Make sure containers are
tightly sealed and remain intact during transport.

Household electrical equipment

Bring equipment primarily intact and without
packaging. Remove dust bags from vacuum cleaners,
glass pots from coffee makers, and glass turntables
from microwave ovens.

You may also bring free of charge:

lamps, metal, paper, glass and cardboard packaging,
small quantities (under 25 litres) of glass, porcelain
and crystal waste, reusable clothing, shoes, bags and
textiles, packed tightly in plastic bags

Way to go!

Properly sorted waste has many
opportunities for reuse – let's not waste it!

Waste sorting can start even with small
actions. Every step you take makes a positive
difference for the environment.

Sorted waste can be utilised in many different
ways, while also reducing the burden on
nature.

Let's do good together.



Have you tried the
new chatbot on our
website yet?

Puhas Oy

Customer Service

You can reach us on weekdays from
9:00 to 15:00, tel. 358 13 318 198
www.puhas.fi/aspa

Online Service 24/7

Make changes to your waste
management services at any time.

www.puhas.fi

 facebook.com/PuhasOy

 instagram.com/Puhasoy

 youtube.com/@puhasoy695

puhas